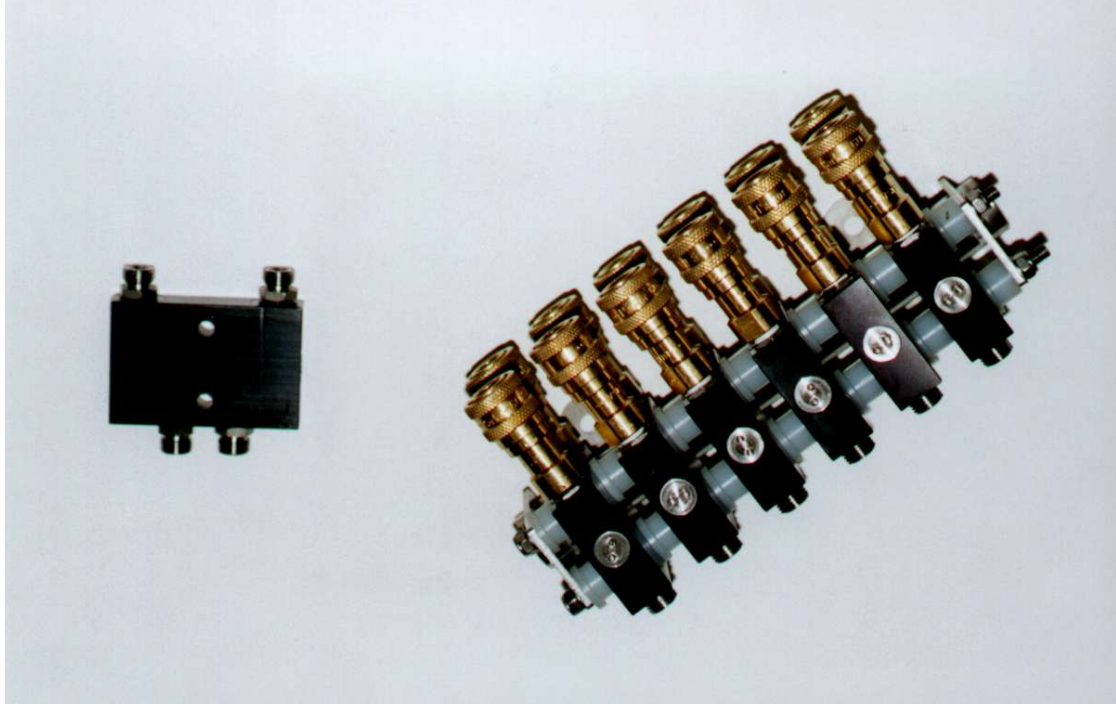




HYDRO-LEK

REMOTE HANDLING SPECIALISTS



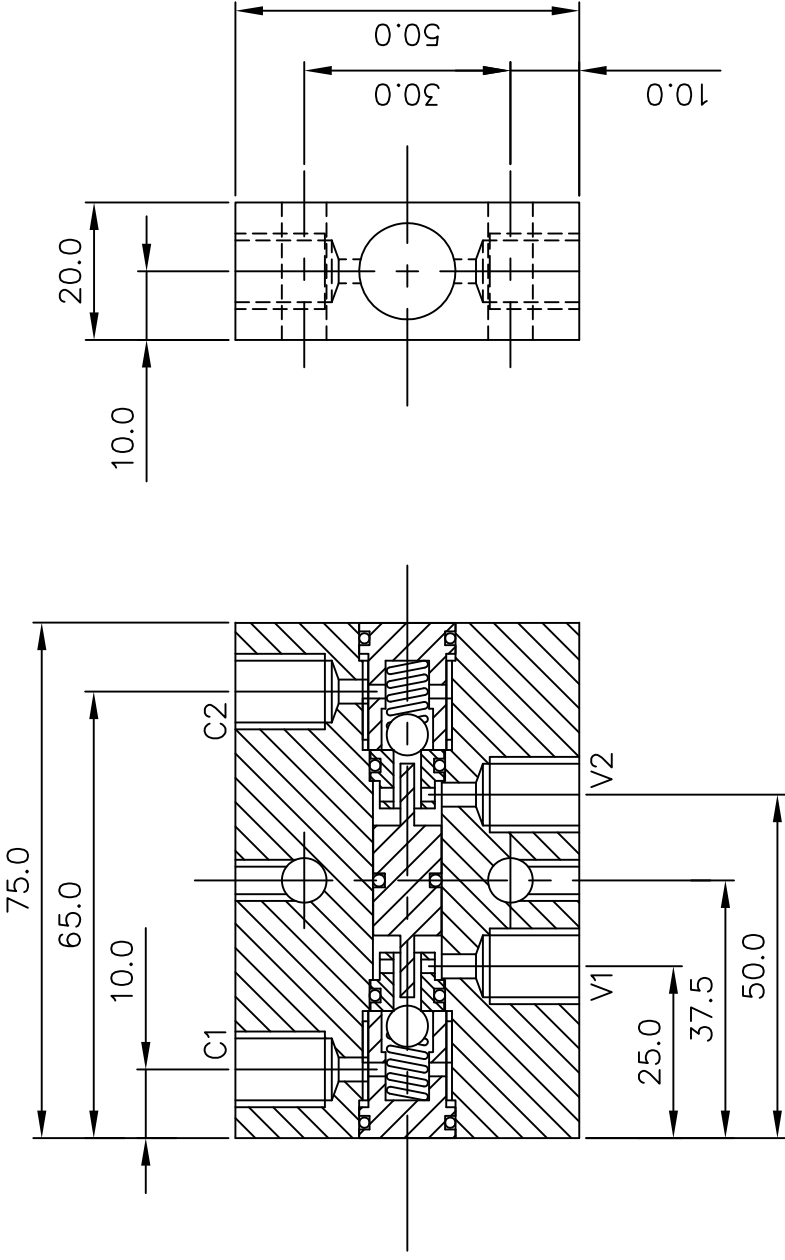
HLK-6000 Pilot Check Block:

The HLK-6000 Pilot Check Blocks are used in conjunction with the valve pack to hydraulically lock cylinders when the hydraulic supply is off. They are very compact units weighing only 140 grams in air (100g in water). They can be ganged in rows or individually, usually fitted with quick connects on the output side. They are recommended for use on all larger arm systems and significantly add to the positive action, which all HLK arms have.

Specification:

Dimensions	Length	75mm
	Width	20mm
	Height	50mm
Weight	Weight in air	0.14Kg
	Weight in water	0.1Kg
Hydraulics	Max working pressure	210 bar
Ports		7/16 SAE
Construction	HE 30 Aluminium alloy	

'C' PORTS TO CYLINDER
 'V' PORTS TO VALVE
 V1; V2; C1; C2 - 7/16" SAE



SPECIFICATION :-

WEIGHT IN AIR 140 g
 WEIGHT IN WATER 100 g
 MAX. WORKING PRESSURE 210 bar
 PORTS 7/16" S.A.E.
 HE 30 HARD ANODISED ALUMINIUM BLOCK

HYDRO-LEK LTD.	HLK-6000 PILOT CHECK BLOCK
ISS. DATE: -	MAT: - VARIOUS
CHKD BY: - REV. NO: -	DRG. NO: - CMR 6000/DATA
DRAWN BY: -JW 18/8/99	C.M. INNOVATIONS LTD.

ALL DIMENSIONS ±0.1 UNLESS OTHERWISE STATED