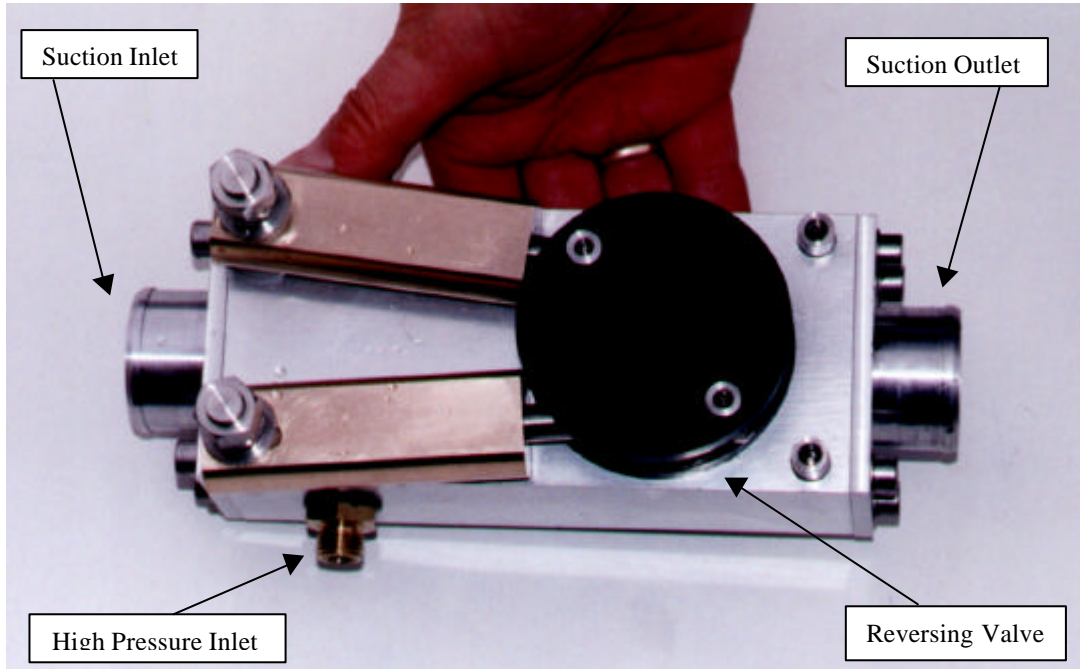




INNOVATIVE DESIGN ENGINEERING



HLK-3150 Suction Pump:

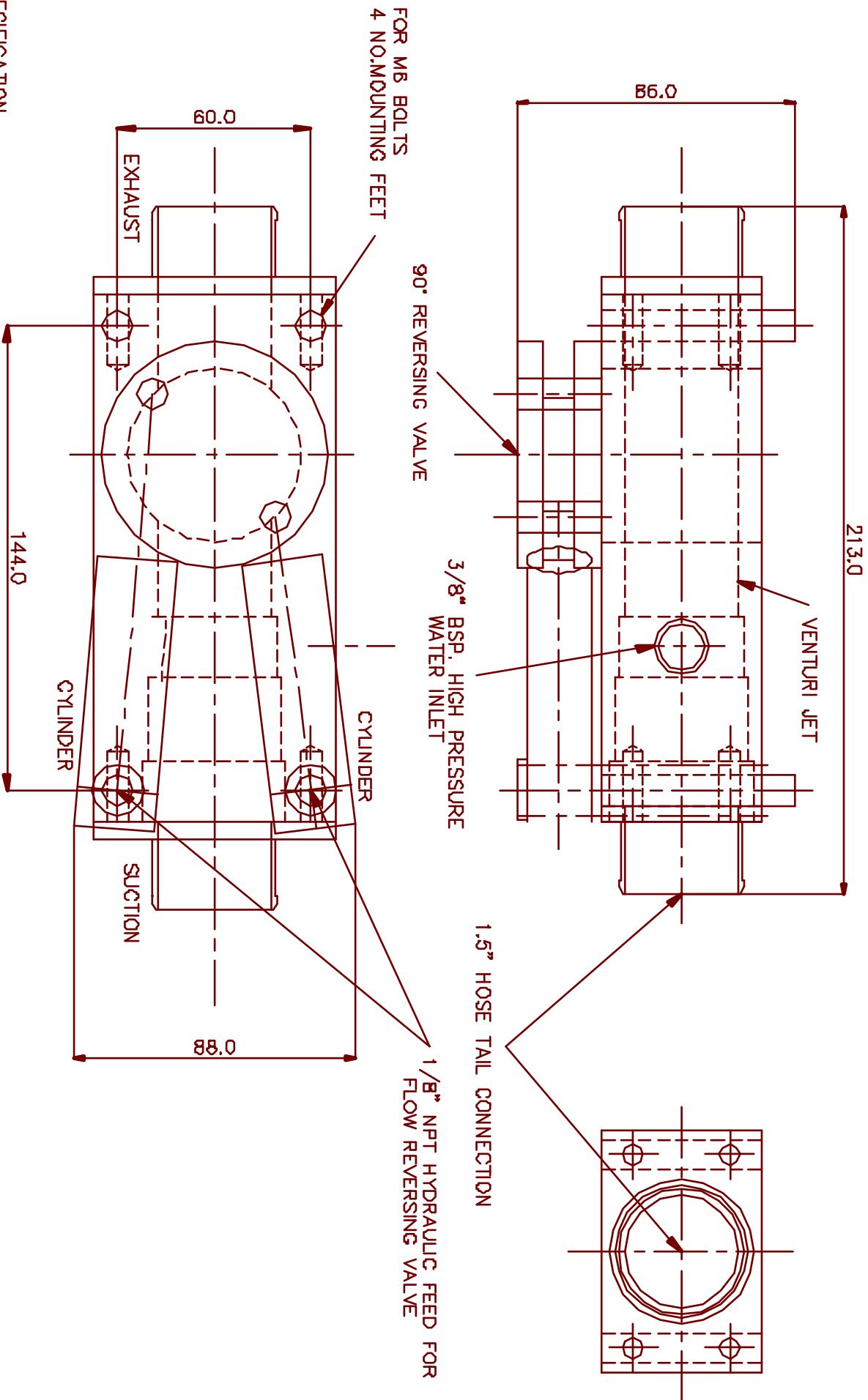
The HLK-3150 Suction Pump is a Venturri device which can be driven from the HLK-3100 water jet pump or similar water supply. It is very compact and is fitted with a reversing valve to enable flows in both directions. Its output performance is dependant on the flow delivered by the separate water jet supply but typically will deliver 100 litres / minute, for a 9 litre / minute input from the pressure source, to a maximum head of 2 - 3 metres. Light weight only **1.6Kg** in water.

Specification:

Dimensions	Overall Length	220mm
	Width	90mm
	Height	100mm
Water Jet Input		9 Litres/min @ 120 Bar
Output		Max Head 2.8 Metres Static
		Flow 100 Litres/min (4.5 M³/min)
Weight	Weight in air	2.0Kg
	Weight in water	1.6Kg
Construction	316 SS	
	HE 30 Hard anodised aluminium	

Hydro-Lek Ltd. Unit 4 Weller Drive Hogwood Lane Ind. Estate Finchampstead Berks. U.K. RG40 4QZ
Telephone: +44(0) 118 9736903 Fax: +44(0) 118 9736915

Web Site <http://www.hydro-lek.com> Email: enquiries@hydro-lek.com



FOR MB BOLTS
4 NOMOUNTING FEET

SPECIFICATION .-

JET INPUT
PUMP OUTPUT
TOTAL WEIGHT IN AIR
TOTAL WEIGHT IN WATER
MATERIALS. -

9L / MIN @ 120 BAR
MAX. HEAD 2.8M STATIC
FLOW 100 litres/MIN.(4.5 CU. M/MIN.)
2.0 KG
1.6 KG
316 S.S.
HE 30 HARD ANODISED ALUMINIUM

HYDRO-LEK LTD.		HLK-3150 SUCTION PUMP	
ISS. DATE:-		MAT:-	
CHKD BY:-	REV NO -	DRG NO:-	CMR 3150/DATA
DRAWN BY:- JW 29/9/99		G.M. INNOVATIONS LTD.	