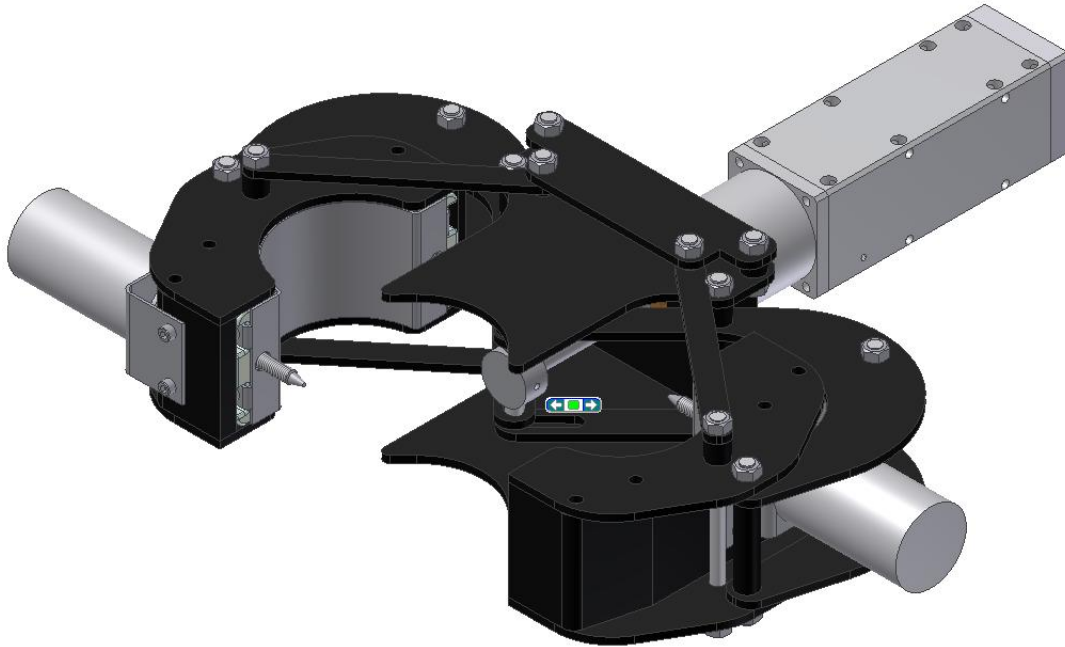




HYDRO-LEK

REMOTE HANDLING SPECIALISTS



HLK-24040 - Clamp installation Jaw Rotate

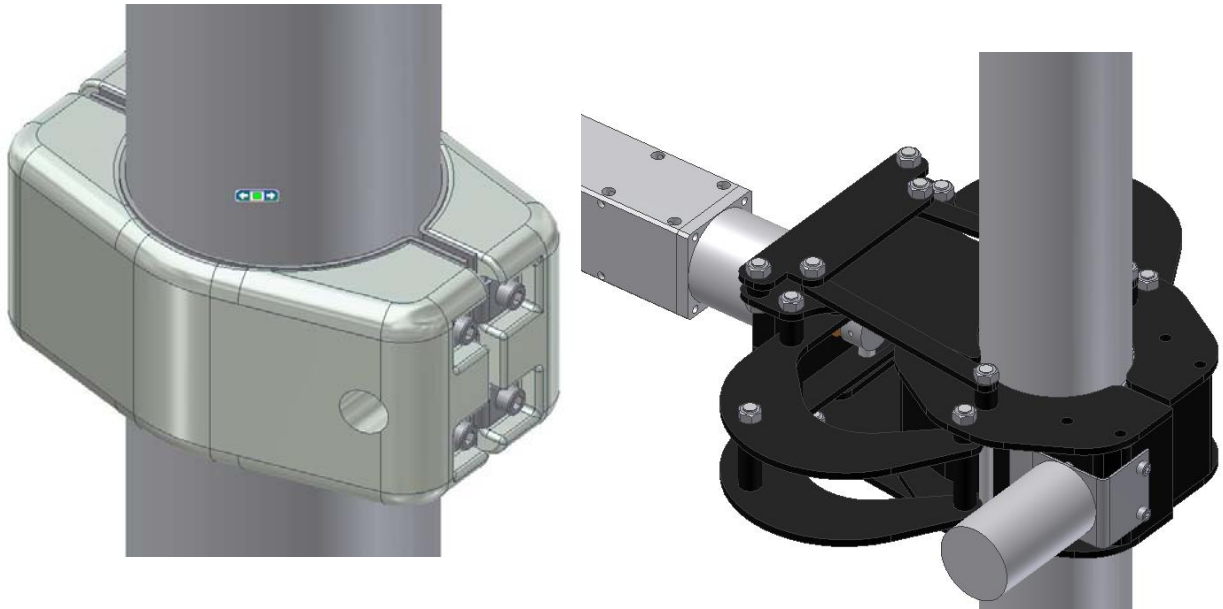
The HLK-24040 Jaw Rotate is designed to be ideal for the ease of installation of zinc anode clamps onto under-water steel cables or other objects to reduce corrosion. These can be modified to accommodate clamps of any diameter and can be built onto an R.O.V. to suit the size required. The Design of this system shown is based around the Hydro-Lek HLK-2040 Jaw Rotate With modified jaws to securely hold the clamps prior to installation. The jaws are fully hydraulically powered and are able to rotate to align the clamp with the cable and then close. The design also includes a hydraulic motor powered lead screw to ensure tight fit around the cable.

The clamps are created bespoke to ensure a good connection between the steel internal surface of the clamp and the object that is being protected. The anodes are manufactured from castings and the number of clamps per length of cable/pipe is calculated to give maximum protection against corrosion.



HYDRO-LEK

REMOTE HANDLING SPECIALISTS



The Manipulator installs the clamp by approaching the object with the clamp held in the jaws. There is a camera that is mounted above the jaw to allow an operator to rotationally align the clamp with the object. There are flanges above and below the jaws with a cut out of equal diameter to the object. These can be used to locate the system in the correct position prior to closing the jaws around the object and securing the clamp.

To ensure a tight fit of the clamps, once the clamp is closed around the object by the hydraulic cylinder, the clamp is then tightly compressed around the object via the use of hydraulic motor driven lead-screws. These are spigoted and tapered to allow maximum ease of installing the clamps using mounted cameras.