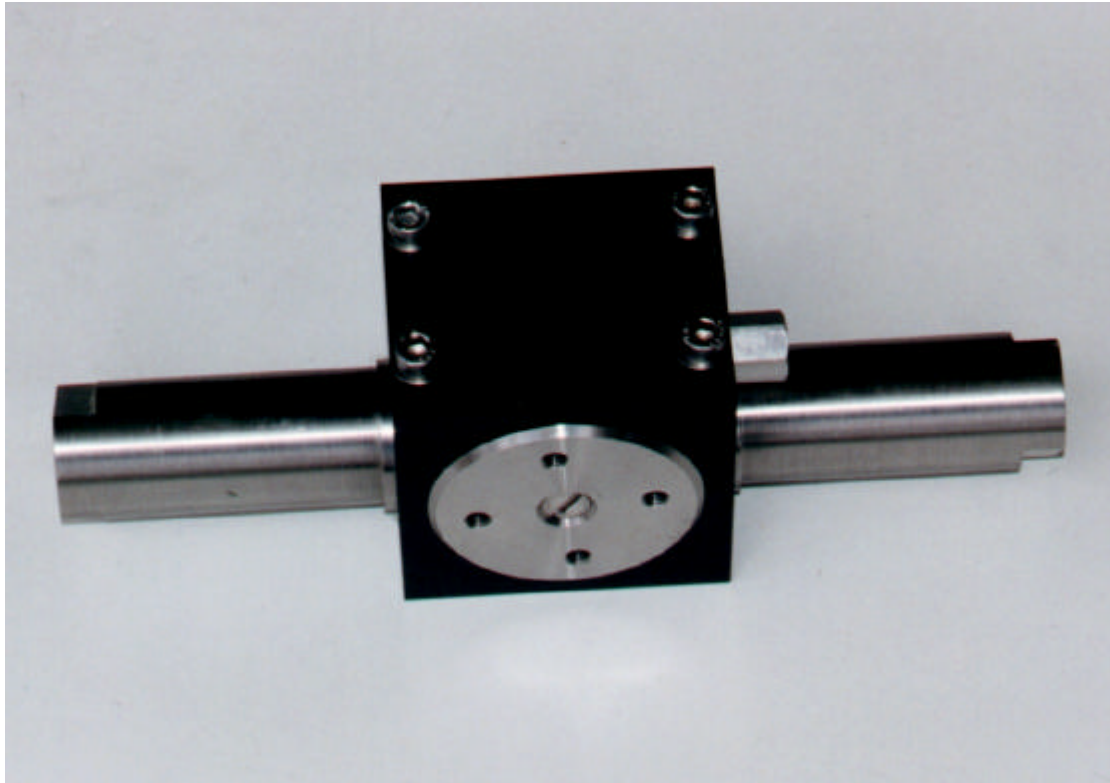




INNOVATIVE DESIGN ENGINEERING



HLK-2290 Compact Camera Rotator:

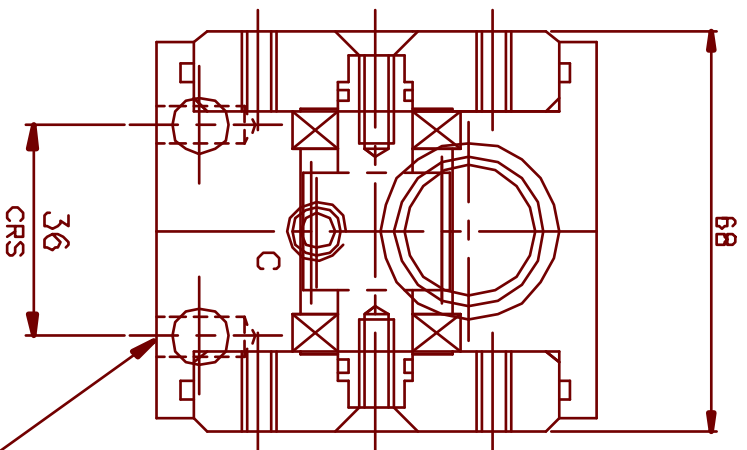
The HLK-2290 Compact Camera Rotator has been developed to carry observation cameras in sub sea robotic, ROV and tooling environments. Being constructed from 316 stainless steel and acetal, it makes it ideal for permanent sub sea installation on steel structures. Also, having through body rotating plates, it makes it an ideal camera and lighting platform.

Specification:

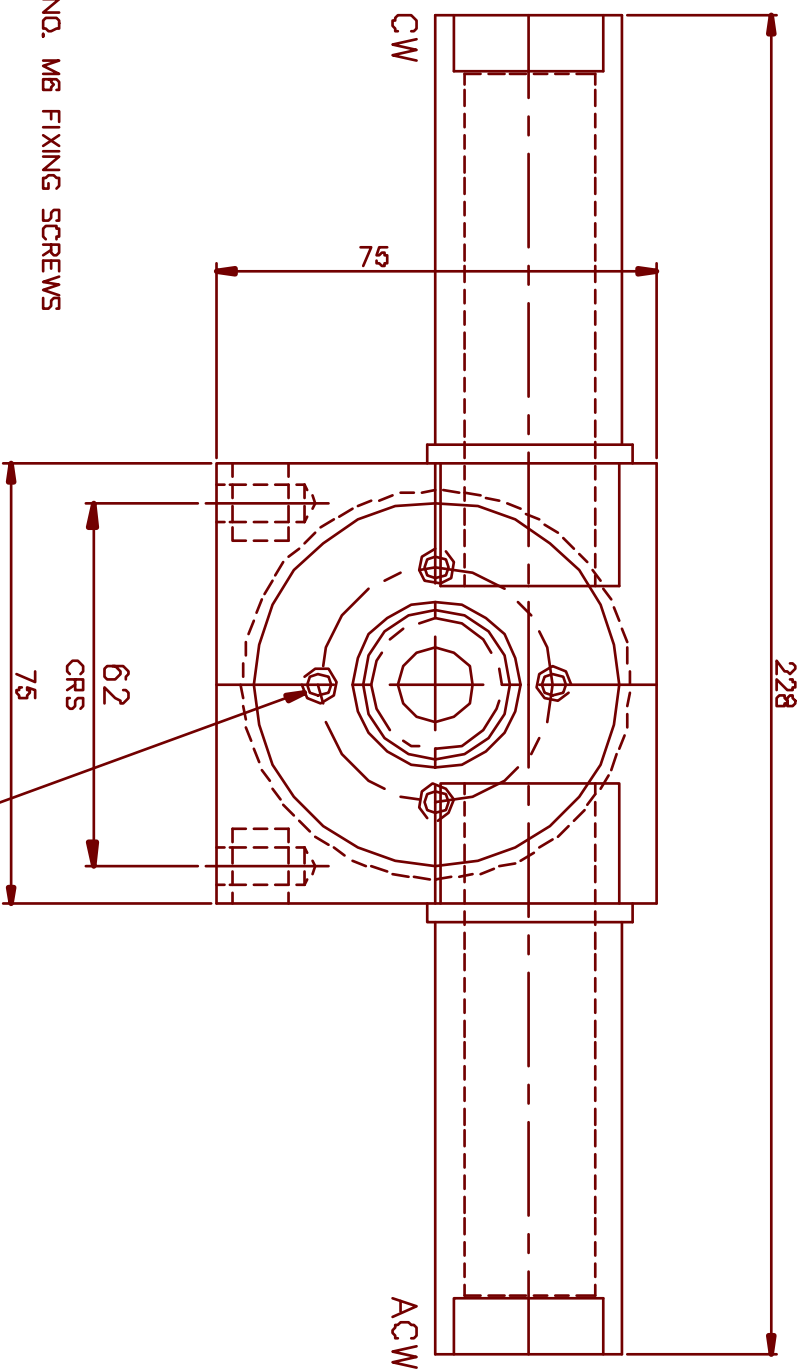
Dimensions	Height	75 mm
	Width	230 mm
	Depth	70 mm
Function	Pan	360°
Weight	Weight in air	2.0 Kg
	Weight in water	1.5 Kg
Material	316 SS	
	Acetal	
Hydraulics	Pan torque	100 NM @ 180 BAR
	Max working pressure	210 bar
Ports		1/8 NPT / 7/16 SAE

Hydro-Lek Ltd. Unit 4 Weller Drive Hogwood Lane Ind. Estate Finchampstead Berks. U.K. RG40 4QZ
Telephone: +44(0) 118 9736903 Fax: +44(0) 118 9736915

Web Site <http://www.hydro-lek.com> Email: enquiries@hydro-lek.com



4 NO. M6 FIXING SCREWS



4 NO. M6 FIXING HOLES
EQUI-SPACED AS SHOWN ON A 40.0 PCD

PORTS

C =
CW =
ACW =

COMPENSATION
PAN CLOCKWISE
PAN C/CLOCKWISE

SPECIFICATION

PAN ANGLE
MAX. WORKING PRESS.
PAN TORQUE
OVERALL HEIGHT
OVERALL WIDTH
WEIGHT IN AIR
WEIGHT IN WATER
PORTS
MATERIALS:-

360°
210 BAR
100 NM
75
68/228
2.0 KG
1.5 KG
1/8" NPT / 7/16" SAE
ACETAL
316 ST. STEEL

HYDRO-LEK LTD		COMPACT CAMERA ROTATOR	
ISS. DATE:-		MAT:- VARIOUS	
CHKD BY:-	REV NO -	DRG NO:-	CMR 2290/DATA
DRAWN BY:- JW 4/5/00		G.M. INNOVATIONS LTD.	