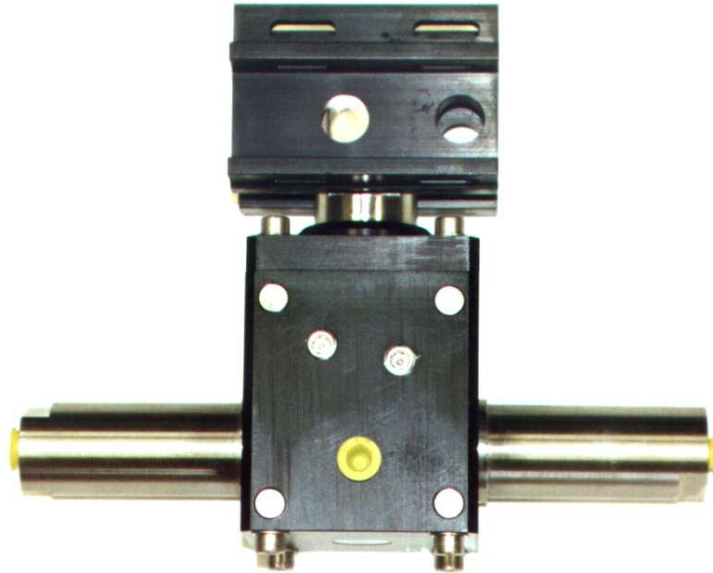




HYDRO-LEK

REMOTE HANDLING SPECIALISTS

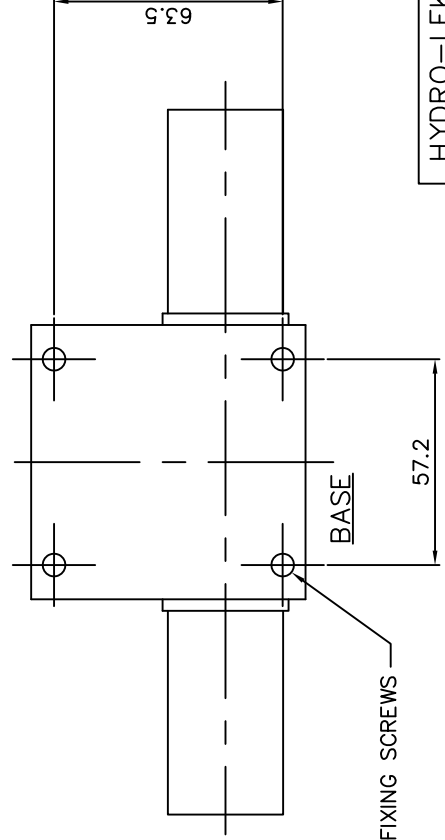
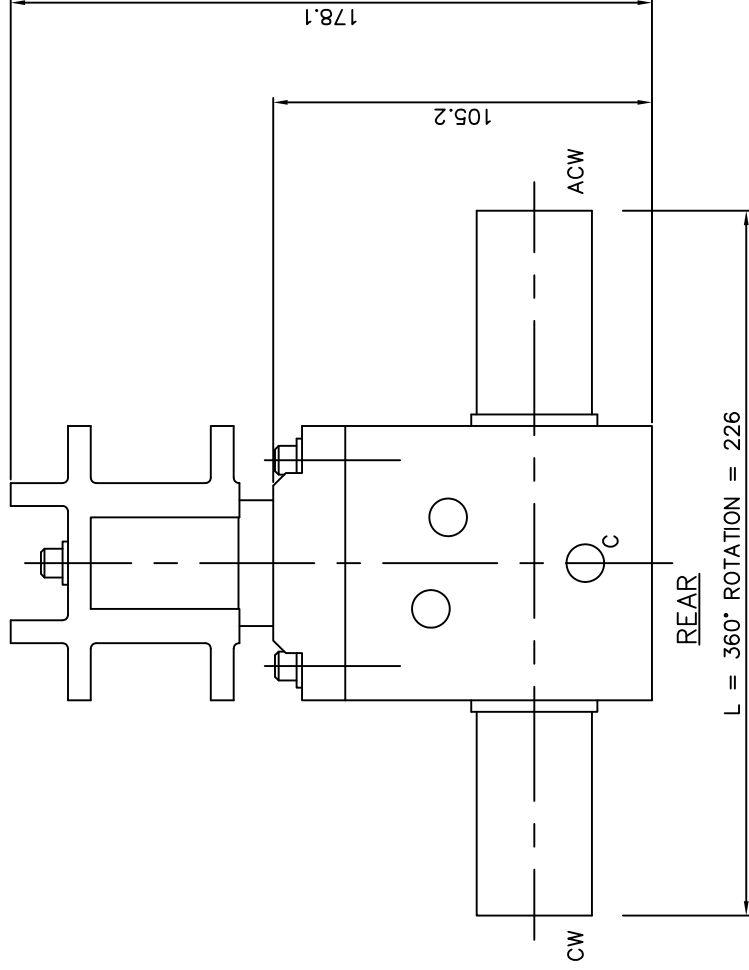
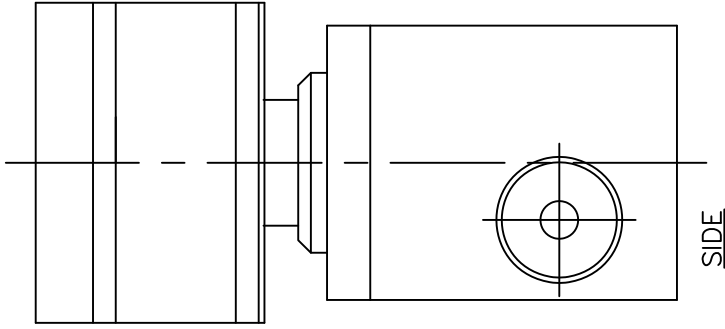


HLK-2200 Camera Rotator:

The HLK-2200 Camera Rotator is a derivative of the HLK-2150 Pan & Tilt using the same base section and camera mount clamp. It has a very rugged shaft and is ideal as a tilt or pan unit only. The redundant slip ring section, which normally drives the pan & tilt unit, can also be used as a high-pressure water jet-port when used as a cleaning head in pipe inspection, cutting and repair tools.

Specification:

Dimensions	Height	178mm
	Width (360° rotation)	226mm
	Depth	76mm
Function	Pan	360°
Weight	Weight in air	3Kg
	Weight in water	2.2Kg
Material	316 SS	
Hydraulics	HE 30 Hard anodised aluminium alloy	
	Max working pressure	210 bar
Ports		7/16 SAE / 1/8 NPT



PORTS

C = COMPENSATION
 CW = PAN CLOCKWISE
 ACW = PAN C/CLOCKWISE

SPECIFICATION

PAN ANGLE 360°
 MAX. WORKING PRESS. 210 BAR
 PAN TORQUE 100 NM
 OVERALL HEIGHT 178
 OVERALL WIDTH 226
 WEIGHT IN AIR 3.0 KG
 WEIGHT IN WATER 2.2 KG
 PORTS 1/8" NPT / 7/16" SAE
 MATERIALS: - HE 30 ALUMINIUM
 316 ST. STEEL

4 NO. M6 FIXING SCREWS

HYDRO-LEK LTD	HLK-2200 CAMERA ROTATE UNIT
ISS. DATE: -	MAT: - VARIOUS
CHKD BY: -	REV. NO: -
DRAWN BY: - JW 19/8/99	DRG. NO: - CMR 2200/DATA
	C.M. INNOVATIONS LTD.