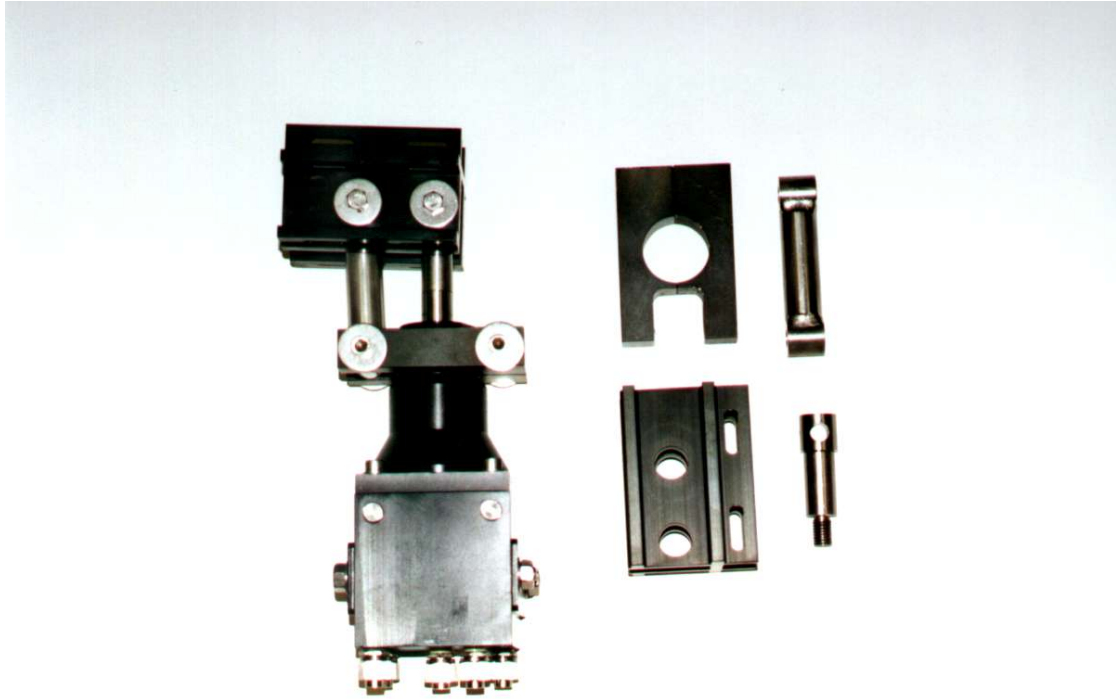




HYDRO-LEK

REMOTE HANDLING SPECIALISTS

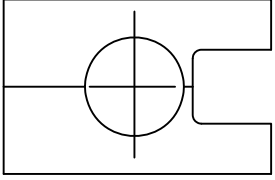
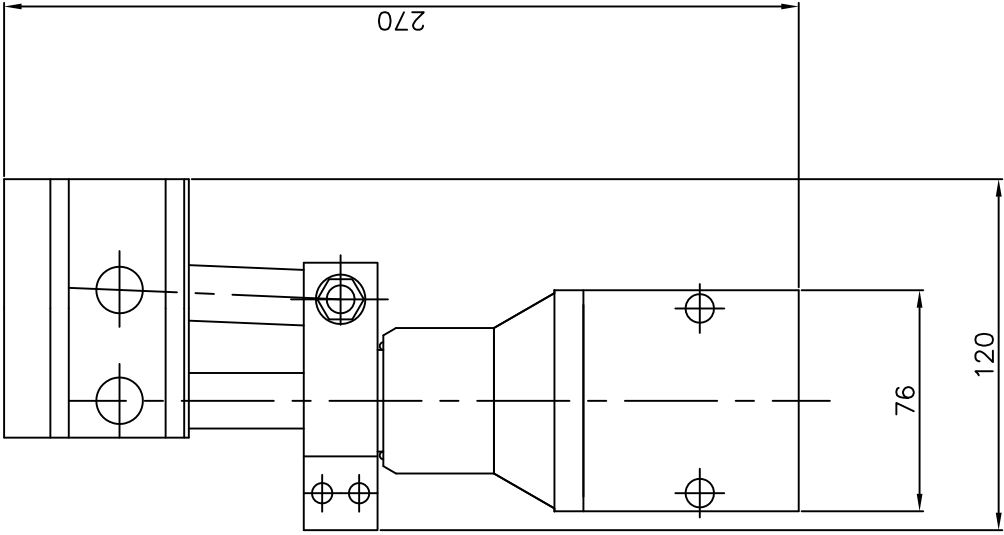


HLK-2010C Camera Conversion Kit:

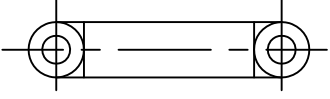
The HLK-2010C Camera Conversion Kit enables the 2010 Jaw Assembly to be converted to a simple Pan & Tilt, without the need to change hydraulic circuits. It comprises of a jaw clamp extension shaft, lazy arm and Pan & Tilt camera bracket. It can be used on either the 2010 or 2020 Jaw Actuator to convert any arm to an inspection camera platform.

Specification:

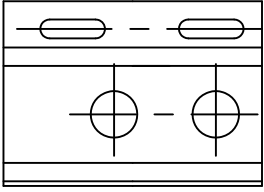
Dimensions	Length	260mm
	Width	120mm
	Height	75mm
Function	Pan	180° /
	Tilt	60°
Continuous	Weight in air	3.5Kg
	Weight in water	2.75Kg
Weight	Construction	316 SS
		HE 30 Hard anodised aluminium
Hydraulics	Max working pressure	210 bar
	Ports	1/8 NPT



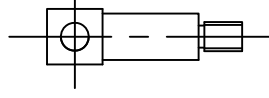
CLAMP



TILT SHAFT



CAMERA BRACKET



PAN SHAFT

SPECIFICATION

- PAN ANGLE 180°
- TILT ANGLE 60°
- MAX. WORKING PRESS. 210 BAR
- WEIGHT IN AIR 3.5 Kg
- WEIGHT IN WATER 2.75 Kg
- PORTS 1/8" NPT
- MATERIALS: - HE 30 HARD ANODISED ALUMINIUM
- 316 ST. STEEL

HYDRO-LEK LTD	HLK-2010C CAMERA CONVERSION KIT
ISS. DATE: -	MAT: - VARIOUS
CHKD BY: -	REV. NO: -
DRAWN BY: - JW 24/8/99	CMR 2010C/DATA
	C.M. INNOVATIONS LTD.