



HYDRO-LEK

REMOTE HANDLING SPECIALISTS

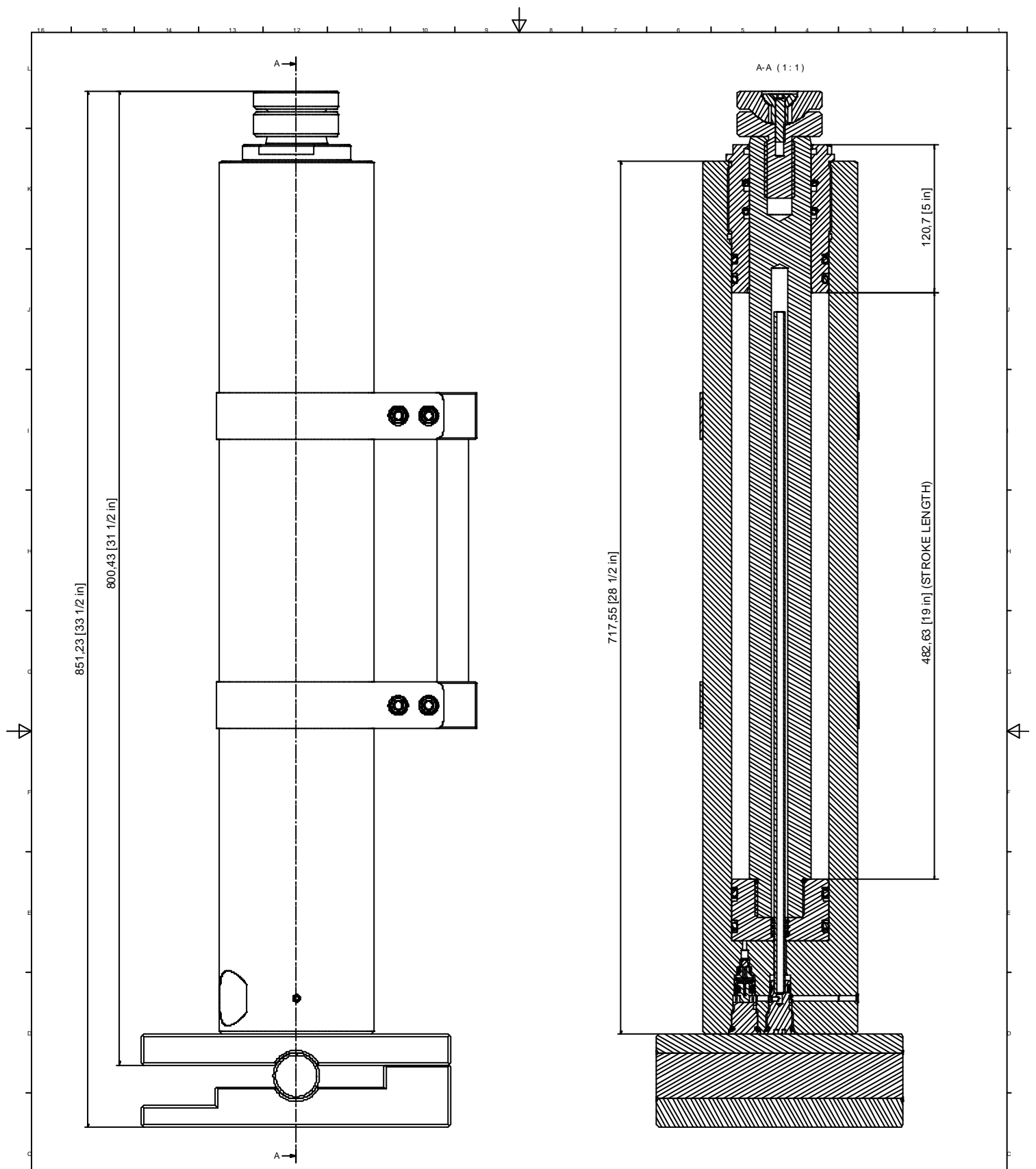


HLK-13300 Jacking System:

The HLK-13300 Railway Jack has been designed with a swivel top and rocking base to jack up freight wagons to change out the wheel sets in sidings and freight yards. Each unit has a built in reverse lock safety valve to prevent load drive retraction even if a burst hose occurs. The jacks are rated at 15 tonne SWL with a closed height of 852mm and a stroke length of 473mm. The construction is all non-ferrous, with an aluminium body and stand, stainless steel shafts and phosphor bronze piston and gland. Each jack is designed to be hand carried into position, with a rugged side mounted handle. The weight of the jack is 38Kg.

Specification:

Height of Cylinder (Inc. Rocker Plate)	852mm
Stroke Length	473mm
Weight of Cylinder	38Kg
Weight of Cylinder (Inc. oil)	44.5Kg
Max Working Load (SWL)	15 Tonnes
Working Hydraulic Pressure (for SWL 15 tonnes)	330 BAR
Hydraulic Ports	3/8" NPT



Specification :

- Maximum Height (Cylinder) : 31 1/2 Inches
- Maximum Height (Cylinder + Rocker Plate) : 33 1/2 Inches
- Maximum Weight (Including Oil) : 44.50 Kgs
- Bore Size : 3 Inches
- Stroke Length : 19 Inches
- Maximum working load : SWL 15 Tonnes
- Standard Porting : 3/8 Inch NPT

All dimensions in mm unless otherwise stated
 All dimensions ± 1.00mm unless otherwise stated
 DO NOT SCALE
 IF IN DOUBT ASK

REV	DATE	BY	CHKD	DESCRIPTION
H PNEUMATICS UNIT 4, WALLE DRIVE H 9th and Lane Indira Nagar Estate, FORT BELAGHATA, DELHI 110 042 TEL: 011 2732001 Fax 011 272692				Cylinder Assembly (DATA) CMR 1.33(0) 3 1 / 1

Typical Jacking Application





